

Subject to technical changes.
For more detailed information please ask our customer service.

SMW-AUTOBLOK Type			D-PLUS 260	D-PLUS 315
Mounting	Size		225	275
	A	mm	260	315
	B	mm	111	111
	C	mm	125	125
	D1	mm	227	275
	E	mm	225	275
	F	mm	140	171.4
	G		M16	M16
	G1		M42 x 1.5	M60 x 1.5
	J	mm	6	6
	P H6	mm	45	63
Piston stroke	S	mm	1.5	1.5
Through-hole	T	mm	32	50
Draw pull min. / max.*	F1	kN	0-25	0-30
Draw push for chuck open	F2	kN	25	30
Moment of inertia		kg·m ²	0.45	0.75
Weight without top tooling		kg	44	65
Recommended actuating cylinders	Type		SIN-DFR	SIN-DFR

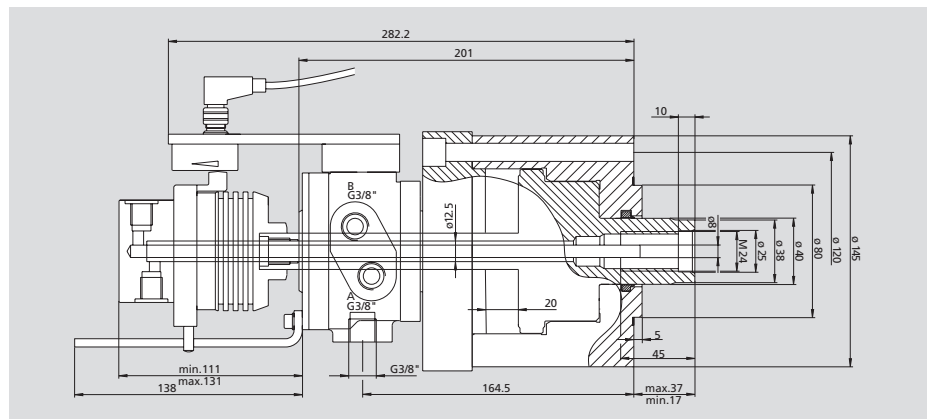
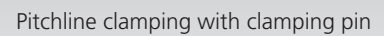
* Additional actuation force to the diaphragm spring clamping force applied by the clamping cylinder.

Advice: The max. allowed speed for the application is permanently marked on the corresponding top jaws and must not be exceeded.

Advice: Please note, that it is important, that the cylinder force for pushing and pulling can be set to different values independently!

Important: Never rotate the chuck without inserted jaws, otherwise the centrifugal force compensation mechanism will get damaged.

- Type C



Piston surface		Pressure		pull min. / max.	push min. / max. (36 bar max.)	Speed max.	Leakage at 30 bar / 50°C	Weight cylinder	Moment of inertia	Weight of rotary union 1 medium	Weight of rotary union 2 media
A pull cm ²	B push cm ²	A min. bar	B max. bar								
21	74	3 - 70	3 - 36	0,6 / 14	2,2 - 27	7000	1,5	9	0,016	0,4	1,5

