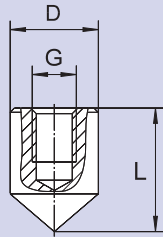
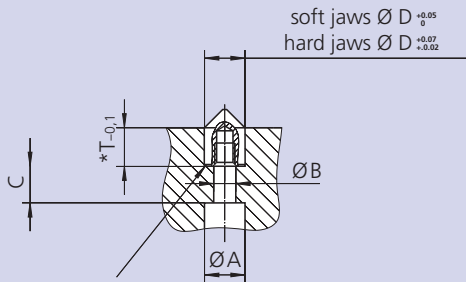


### MGH Hardened steel



Parts included: Hardened tip without screw



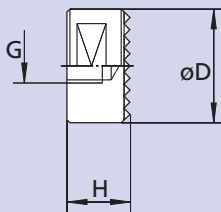
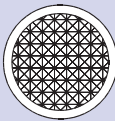
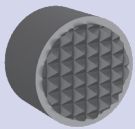
\*equal per set within 0.1 mm-

### Clamping tips for jaws

- For external and internal gripping.
- Increasing gripping allows for heavier cuts.
- Rear mounting of bolts.
- Point seat can easily be machined: drilling only.

Type	MGH 6	MGH 8	MGH 10	MGH 12
<b>Id. No.</b>	081851	087805	081852	081853
<b>D</b> mm	6	8	10	12
<b>L</b> mm	10	12	14	16
<b>G</b> mm	M3	M4	M5	M6
<b>A</b> mm	6	8	10	11
<b>B</b> mm	3.4	4.5	5.5	6.6
<b>C</b> mm	9	9	9	11
<b>T</b> mm	7.5	8.5	9.5	10.5
<b>R</b> mm	0.3	0.5	0.5	0.5
<b>Torx Screw ISO 4762</b>	M3 x 14	M4 x 14	M5 x 14	M6 x 16

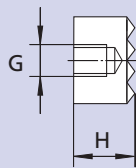
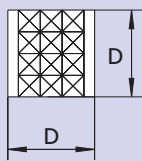
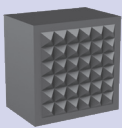
### HDS-R Carbide soldered



### Grippers for jaws, fixtures

- For O.D. gripping.
- Increase of the transmittable torque on raw or machined work pieces.
- Rear mounting threads or side gages for locking.
- The pocket can easily be machined.

### HDS-Q Carbide soldered



Type	Id. No.	D	H	G	max. load force $F^{(1)}$ (daN)	rec. mounting	
						bore- $\varnothing + 0.05$	bore depth
HDS-R 10	081846	10	10	M5	800	10	9.0
HDS-R 11	081847	12.7	9.5	M5	1100	12.7	8.5
HDS-R 12	081848	12.7	12.7	M6	1100	12.7	11.5
HDS-R 13	081849	15.8	9.5	M6	2000	15.8	8.5
HDS-R 14	081850	19	9.5	M6	3000	19	8.5
HDS-Q 15	033058	12.7	9.5	M6	2000	-	-