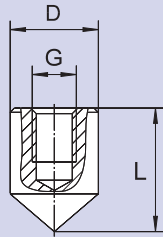
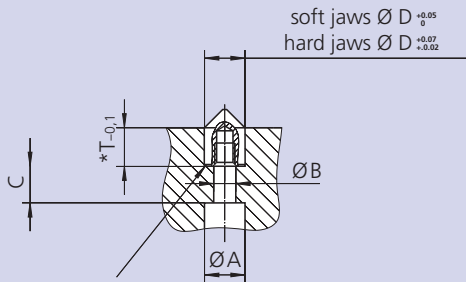


MGH Hardened steel



Parts included: Hardened tip without screw



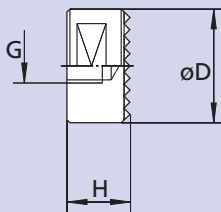
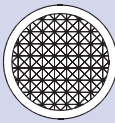
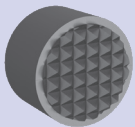
*equal per set within 0.1 mm-

Clamping tips for jaws

- For external and internal gripping.
- Increasing gripping allows for heavier cuts.
- Rear mounting of bolts.
- Point seat can easily be machined: drilling only.

| Type | MGH 6 | MGH 8 | MGH 10 | MGH 12 |
|----------------------------|---------|---------|---------|---------|
| Id. No. | 081851 | 087805 | 081852 | 081853 |
| D mm | 6 | 8 | 10 | 12 |
| L mm | 10 | 12 | 14 | 16 |
| G mm | M3 | M4 | M5 | M6 |
| A mm | 6 | 8 | 10 | 11 |
| B mm | 3.4 | 4.5 | 5.5 | 6.6 |
| C mm | 9 | 9 | 9 | 11 |
| T mm | 7.5 | 8.5 | 9.5 | 10.5 |
| R mm | 0.3 | 0.5 | 0.5 | 0.5 |
| Torx Screw ISO 4762 | M3 x 14 | M4 x 14 | M5 x 14 | M6 x 16 |

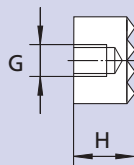
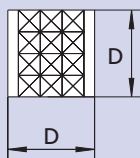
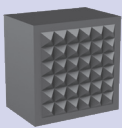
HDS-R Carbide soldered



Grippers for jaws, fixtures

- For O.D. gripping.
- Increase of the transmittable torque on raw or machined work pieces.
- Rear mounting threads or side gages for locking.
- The pocket can easily be machined.

HDS-Q Carbide soldered



| Type | Id. No. | D | H | G | max. load force $F^{(1)}$ (daN) | rec. mounting | |
|----------|---------|------|------|----|------------------------------------|----------------------------|------------|
| | | | | | | bore- $\varnothing + 0.05$ | bore depth |
| HDS-R 10 | 081846 | 10 | 10 | M5 | 800 | 10 | 9.0 |
| HDS-R 11 | 081847 | 12.7 | 9.5 | M5 | 1100 | 12.7 | 8.5 |
| HDS-R 12 | 081848 | 12.7 | 12.7 | M6 | 1100 | 12.7 | 11.5 |
| HDS-R 13 | 081849 | 15.8 | 9.5 | M6 | 2000 | 15.8 | 8.5 |
| HDS-R 14 | 081850 | 19 | 9.5 | M6 | 3000 | 19 | 8.5 |
| HDS-Q 15 | 033058 | 12.7 | 9.5 | M6 | 2000 | - | - |