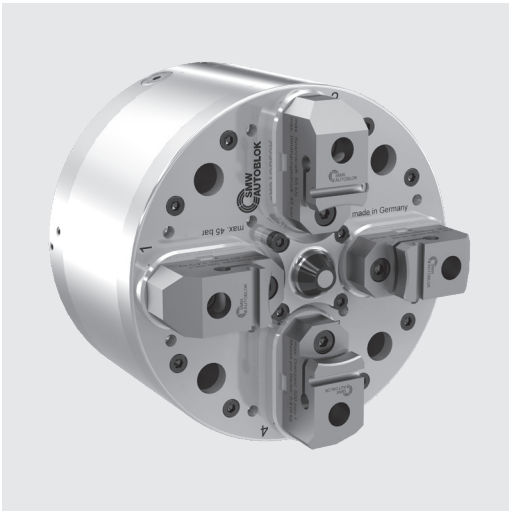


2+2 jaw compensating chuck

- 2+2 jaw hydraulic actuation
- Quick change center or adjustable
- For grinding
- Sealed and low maintenance



Application/customer benefits

- For grinding of shafts

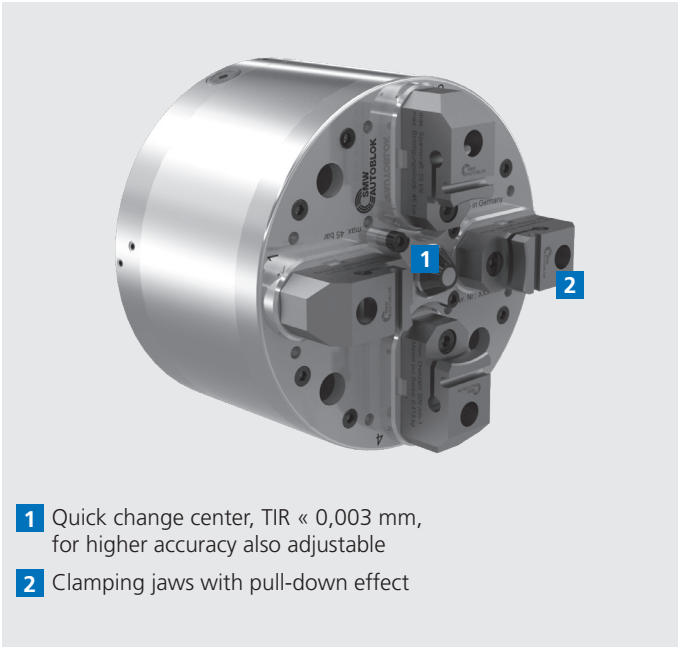
Technical features

- 2+2 jaw hydraulic actuation
- Oil distribution via hydraulic manifold
- Quick change center or adjustable
- Sealed, oil bath lubricated and low maintenance

Standard equipment

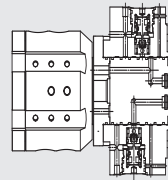
2+2 jaw compensating chuck
without center
without top jaws

Product features SCG



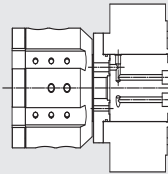
- 1** Quick change center, TIR $\ll 0,003\text{ mm}$, for higher accuracy also adjustable
- 2** Clamping jaws with pull-down effect

Rotary distributor adaption versions



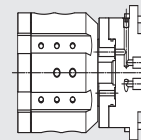
Version 1:
Rotary distributor with flange
with safety valves

Id. No. 046881



Version 2:
Rotary distributor with flange
two-pieced

Id. No. 046880

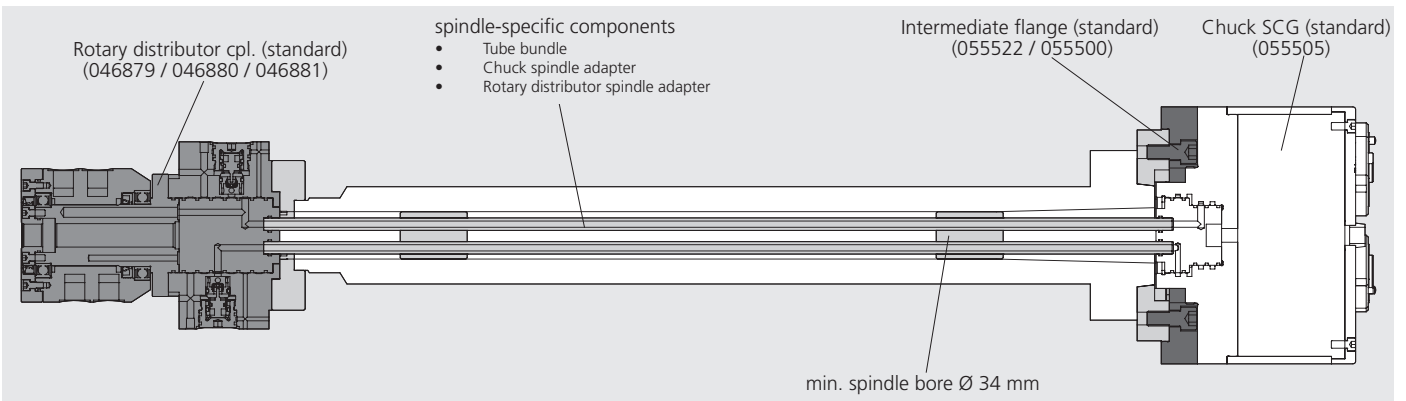


Version 3:
Rotary distributor with flange
compact

Id. No. 046879

Ordering review

| Item | Order number |
|--|--------------------------|
| Chuck | 055505 |
| Intermediate flange / intermediate flange adjustable | 055522 / 055500 |
| Rotary distributor cpl. | 046879 / 046880 / 046881 |
| spindle-specific components | tbd. |

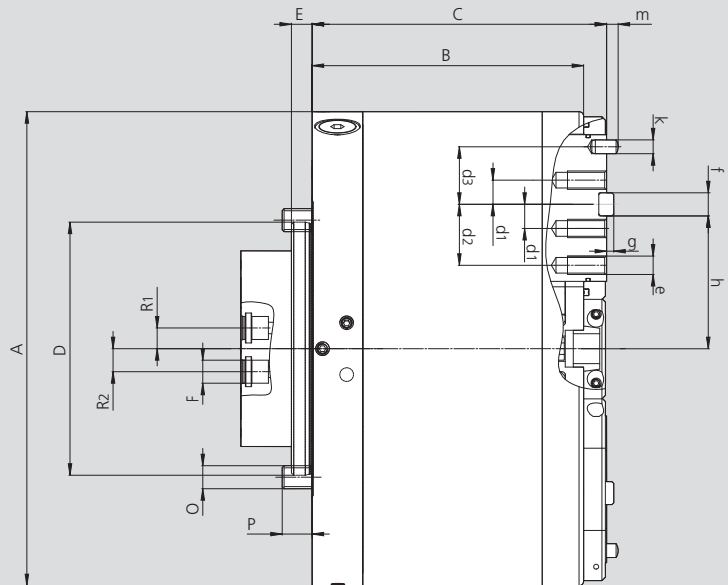
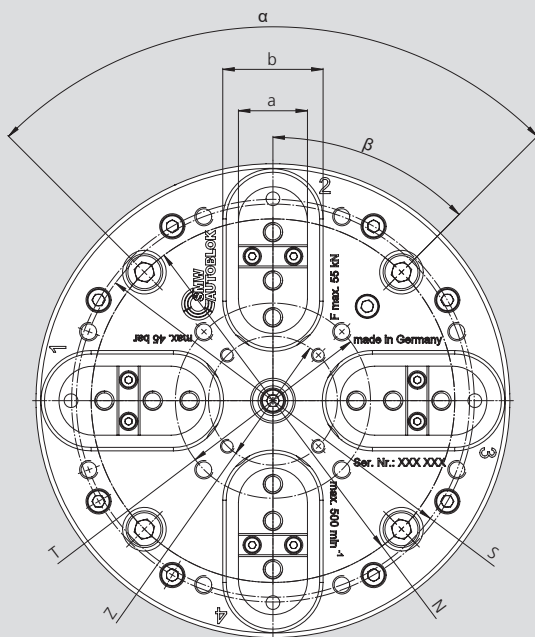


2+2 jaw compensating chuck

- 2+2 jaw hydraulic actuation
- Quick change center
- For grinding
- Sealed and low maintenance

SCG

2+2 jaw hydraulic actuation



Subject to technical changes.
For more detailed information please ask our customer service.

4

| SMW-AUTOBLOK Type | | SCG 206 | |
|---|-------------------|---------|------------------------|
| Mounting | Size | Z110 | |
| | A | mm | 206 |
| | B | mm | 118 |
| | C | mm | 128 |
| Centering | D | mm | 110 |
| | E | mm | 9 |
| Connection bore for tube bundle (dia. - depth - No.) | F | mm | Ø10 x 12mm - 4 x 90° |
| Fixing bolt circle | N | mm | 158 |
| Fixing bolt | O | mm | M10 (4x) |
| Min. thread engagement of the fixing bolt | P | mm | 13 |
| Bolt-circle for centerpoint (dia. - size - depth - No.) | Z | mm | Ø56 - M6 x 8 - 4 x 90° |
| Bolt-circle for tube bundle (3x) Radius | R1 | mm | 18 |
| Bolt-circle for tube bundle (1x / clamping jaws 1+3) Radius | R2 | mm | 20 |
| Bolt-circle (dia. - size - depth) | S | mm | Ø170.9 - M8 x 8 |
| Bolt-circle (dia. - size - depth) | T | mm | Ø84.8 - M8 x 8 |
| | a | mm | 30 |
| | b | mm | 43.6 |
| | d1 | mm | 10.5 |
| | d2 | mm | 26.5 |
| | d3 | mm | 25 |
| Thread jaws (3x) | e | mm | M8 x 17 |
| Notch | f h6 | mm | 10 |
| | g | mm | 3.1 |
| Distance between notch and center of chuck (chuck opened) | h | mm | 57.75 |
| Pin | k h6 | mm | 6 |
| | m | mm | 5 |
| | alpha | deg. | 90 |
| | beta | deg. | 45 |
| Radial jaw stroke | mm | | 2 |
| Pressure max. | bar | | 45 |
| Gripping force max. | kN | | 55 |
| Speed max. | r.p.m. | | 500 |
| Weight (without top jaws) | kg | | 31 |
| Moment of inertia | kg·m ² | | 0.22 |